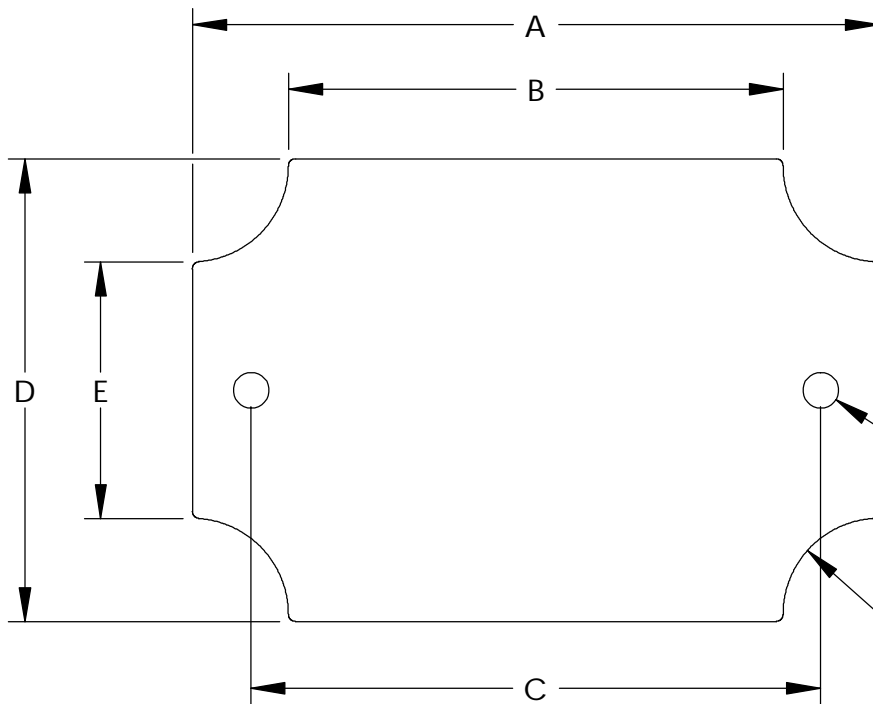


PART  
NAME

## INTERNAL PANEL

PART  
No.

NBX-10975 THRU NBX-10979 AND NBX-10984



MATERIAL:  
16 GAUGE GALVANIZED STEEL (.062 [1.5 mm] THK.)

ALL DIMENSIONS HAVE A  $\pm .015$  [.4 mm] TOLERANCE  
UNLESS OTHERWISE SPECIFIED

ALL PANELS ARE SUPPLIED WITH QTY. (2) M4 x 8mm LG.  
TRUSS HD. PHILLIPS DRIVE STAINLESS STEEL MACHINE  
SCREWS

$\phi .197$   
[5 mm]  
(2) PLCS.

F RADIUS (4) PLCS.

PART No.	A	B	C	D	E	F
NBX-10975	3.805 [96.5 mm]	2.739 [69.5 mm]	3.170 [80 mm]	2.560 [65 mm]	1.415 [36 mm]	.551 [14 mm]
NBX-10976	4.556 [115.5 mm]	3.492 [88.5 mm]	3.930 [99.5 mm]	2.560 [65 mm]	1.415 [36 mm]	.551 [14 mm]
NBX-10977	6.516 [165.5 mm]	5.450 [138 mm]	5.866 [149.5 mm]	2.560 [65 mm]	1.415 [36 mm]	.551 [14 mm]
NBX-10978	9.233 [234.5 mm]	8.167 [207 mm]	8.622 [219 mm]	2.560 [65 mm]	1.415 [36 mm]	.551 [14 mm]
NBX-10979	9.262 [235 mm]	8.283 [210 mm]	8.283 [210 mm]	5.384 [137 mm]	4.409 [112 mm]	.437 [11 mm]
NBX-10984	4.882 [124 mm]	4.194 [106.5 mm]	4.330 [110 mm]	4.882 [124 mm]	4.194 [106.5 mm]	.344 [8.7 mm]